



---

## New Construction

PROGRESS UPDATE  
December 2023

---

# Southeast Pre K-12 School





## PROJECT SUMMARY

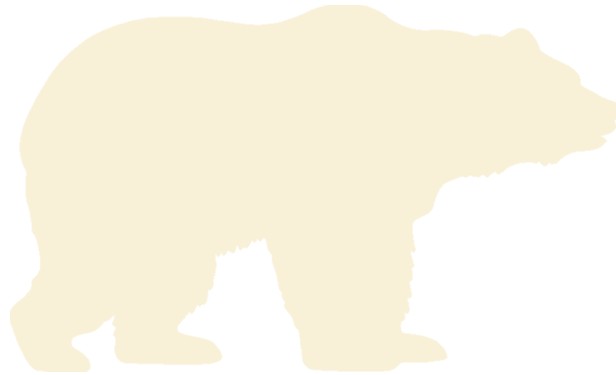
### Site Development & Landscaping

#### December 2023 Progress

- Northside Downspout Storm Piping– 5%

#### Upcoming Progress

- Southside Downspout Storm Piping



## PROJECT SUMMARY

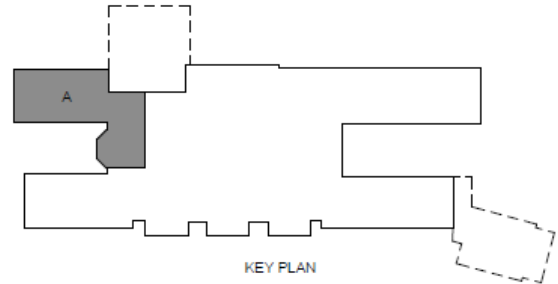
### Area A

#### December 2023 Progress

- Hang Wall Board– 100%
- Wall Panels– 40%
- Pipe Labeling– 100%
- Pipe Insulation– 100%
- Roof Finishes– 100%
- Drywall Finish Taping– 100%
- Finish Paint– 85%
- Ceiling Grid– 35%
- Tech Cabling– 70%

#### Upcoming Progress

- Finish Paint
- Tech Cabling
- Begin Casework
- Begin Flooring
- Ceiling Grid

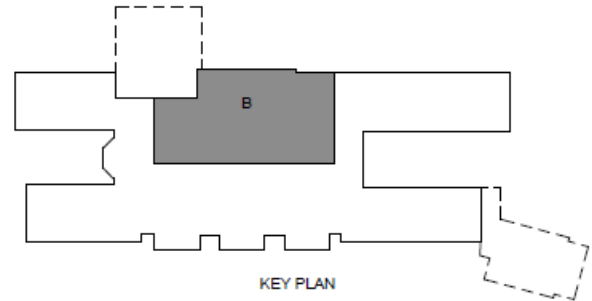


## PROJECT SUMMARY

### Area B

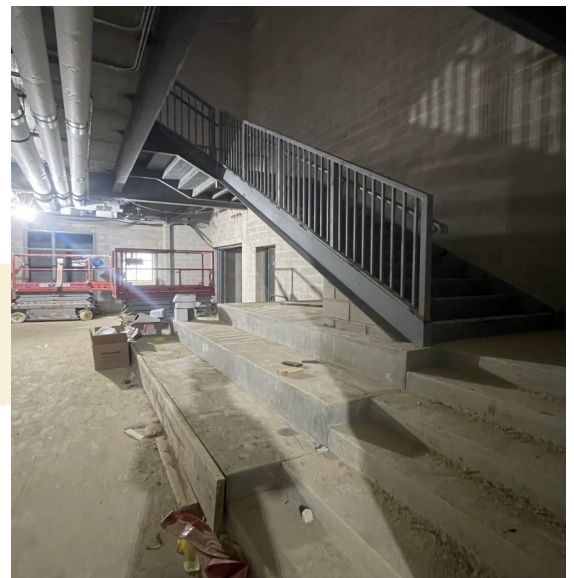
#### December 2023 Progress

- Temp Roof Dry-in– 100%
- Pipe Labeling– 50%
- Roof Finishes– 10%
- Second Floor MEP Overhead Ongoing– 85%
- Temp Heat– 100%
- Set Stairwell– 90%
- Pipe Insulation– 50%



#### Upcoming Progress

- Prep CMU Walls for Paint
- Pipe Labeling
- Second Floor MEP Overhead Rough-in
- Pour Stairs
- Continue Pipe Insulation



## PROJECT SUMMARY

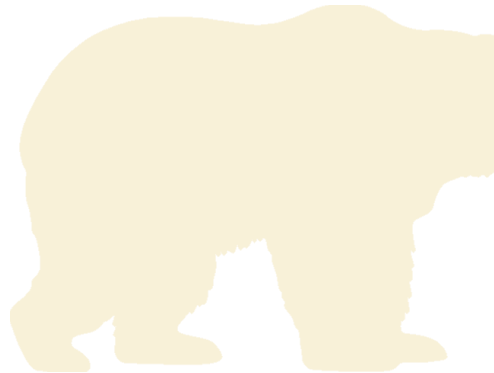
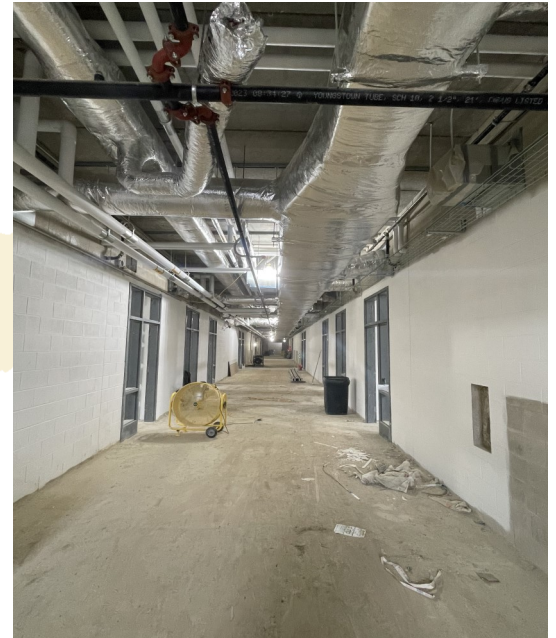
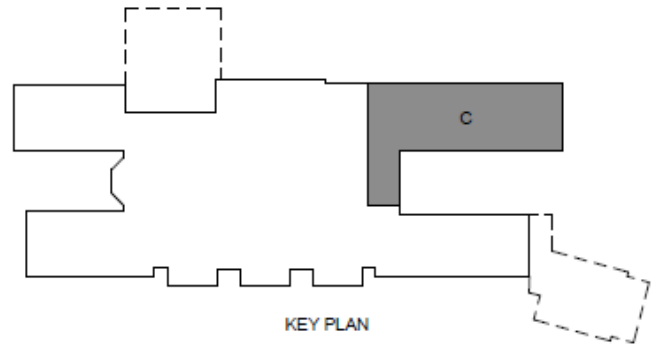
### Area C

#### December 2023 Progress

- MEP Piping– 100%
- Wall Panels– 10%
- Fire Protection Rough-in– 100%
- Pipe Insulation– 65%
- Pipe Labeling– 85%
- Roof Finishes– 50%
- Hang Wall Board– 90%
- Drywall Finish Taping– 80%
- Prime Paint– 95%
- Tech Cabling– 30%

#### Upcoming Progress

- Finish Paint
- Pipe Labeling
- Hang Wall Board
- Drywall Finish Taping
- Tech Cabling



## PROJECT SUMMARY

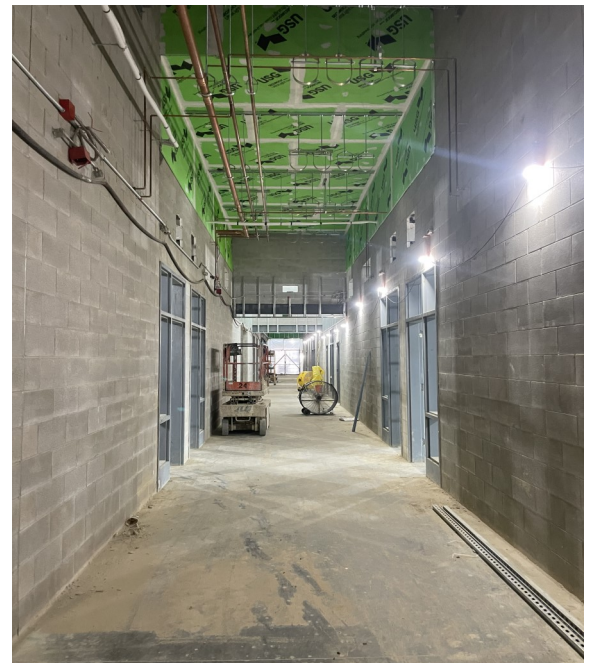
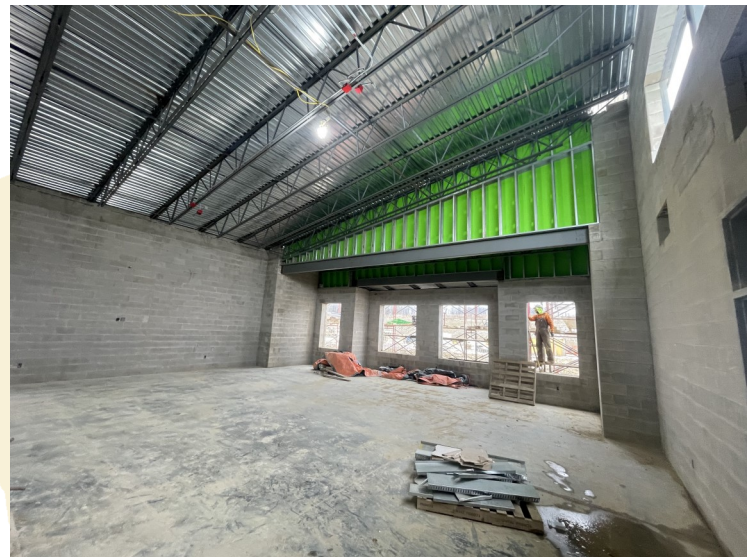
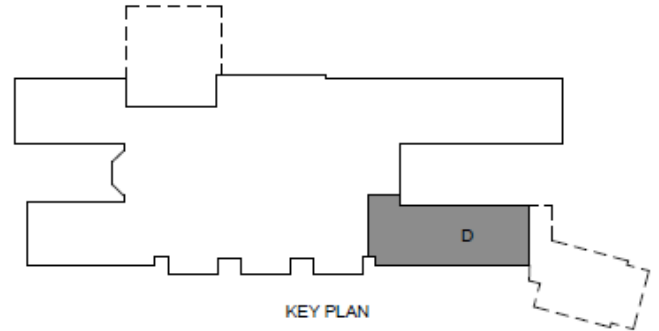
### Area D

#### December 2023 Progress

- MEP Rough – In– 60%
- MEP Piping– 60%
- Cavity Insulation and Brick Veneer– 100%
- Set Windows– 100%
- Temp Heat– 100%
- Densglass Taping– 100%
- Exterior Framing– 100%

#### Upcoming Progress

- MEP Rough – In
- MEP Piping
- Pipe Insulation
- Prep CMU Walls for Paint

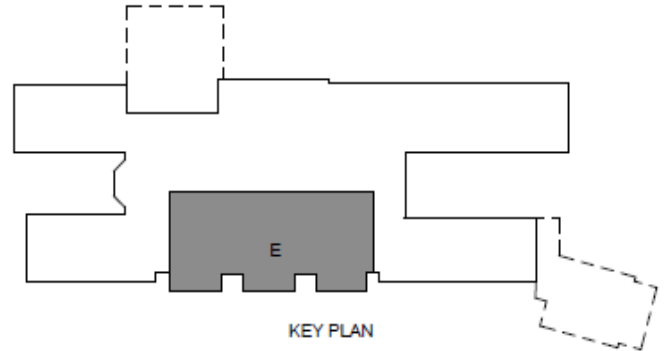


## PROJECT SUMMARY

### Area E

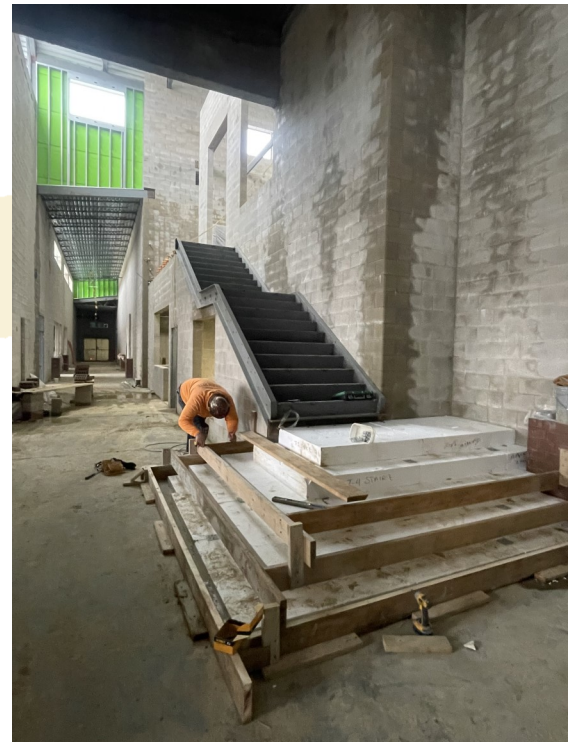
#### December 2023 Progress

- Temp Roof Dry-in– 100%
- Prep CMU Walls for Paint– 70%
- Second Floor MEP Overhead Rough-in– 85%
- Form and Pour Stair Geofoam-30%
- Temp Enclosure– 50%
- Temp Heat– 50%
- Cavity Insulation and Brick Veneer– 80%
- Set Stairwell-100%



#### Upcoming Progress

- Continue MEP Overhead Rough-in
- Cavity Insulation and Brick Veneer
- Temp Heat
- Pour Stair
- Wall Framing

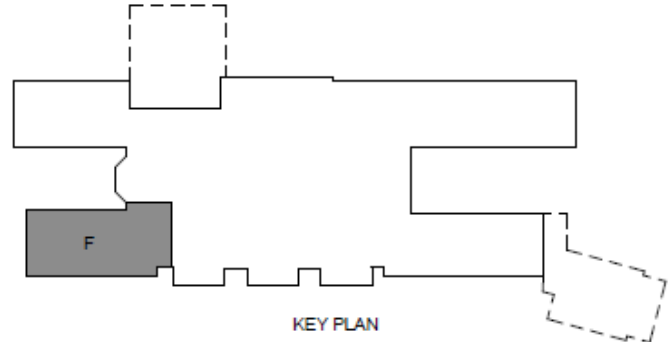


## PROJECT SUMMARY

### Area F

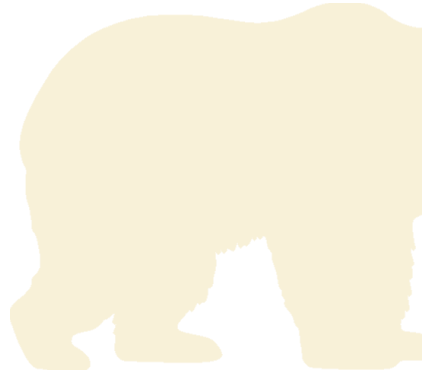
#### December 2023 Progress

- Hang Wall Board– 100%
- Roof Finishes– 95%
- Tech Cabling– 55%
- Finish Paint– 85%
- Drywall Finish Taping– 100%
- Pipe Labeling– 100%
- Pipe Insulation– 100%



#### Upcoming Progress

- Ceiling Grid
- Finish Paint
- Tech Cabling





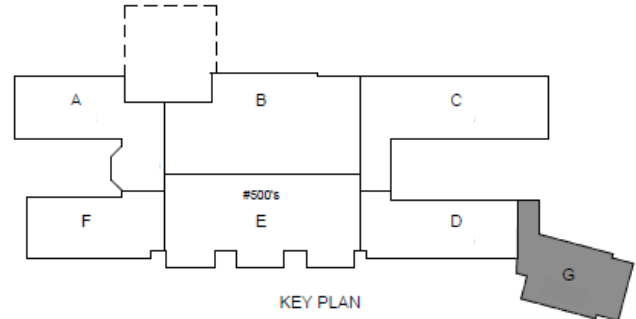


## PROJECT SUMMARY

### Area G

#### December 2023 Progress

- MEP Rough-In– 45%
- Temp Roof Dry-in– 95%
- MEP Piping– 45%
- Set Windows– 85%
- Cavity Insulation and Brick Veneer– 95%



#### Upcoming Progress

- MEP Piping
- Set Windows
- Temp Heat
- MEP Rough-In
- Prep CMU Walls for Paint
- Cavity Insulation and Brick Veneer

